

DIGITAL TRANSFORMATION MANAGEMENT

Solution Datasheet

A Project & Portfolio Management (PPM) solution powered by the Anaplan platform that empowers enterprise organizations to:

- Create business cases for initiatives
- Slice-and-dice portfolios & measure ROI
- Monitor project financials & risks
- Manage projects from inception to completion

CONSTELLATION | Anaplan

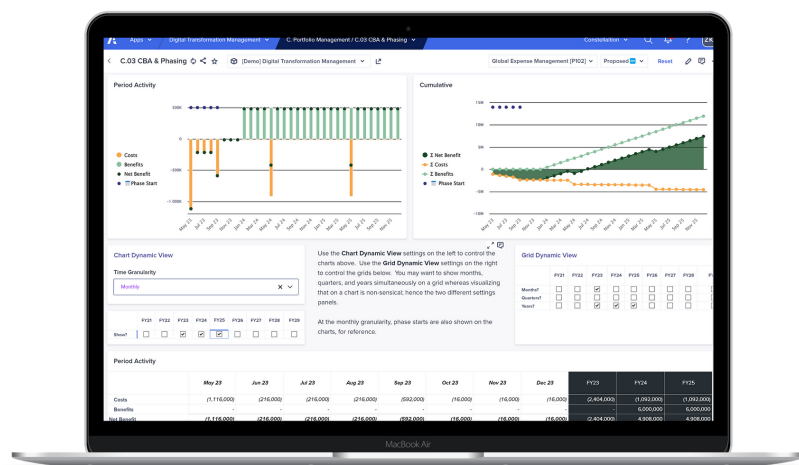
Make the Business Case for Innovation

Every modern enterprise is in the throes of digital transformation. Organizational leaders know they must continue to invest in the digitization of their business, to continue innovating, to become more agile - or slowly become overtaken by their competitors.

But the days of throwing money at the problem are over. Most organizations have by now had their share of failed cloud transformations; and coupled with overarching macroeconomic volatility, executive teams and boards of directors are now looking at their transformation portfolios with more scrutiny.

Project Champions will now be called on to provide business cases for the transformations they propose, with clear line-of-sight to measurable ROI.

Constellation's DTM solution provides a stage for transformation stakeholders to estimate initiative costs and benefits over time. Cherry on top: the ability to easily input retrospective cost/benefit analysis, enabling comparison of value promised vs value delivered.



Solution Features



Simple but powerful initiative cost/benefit estimator over a 10-year horizon, incl. recurring costs & CAGR



Create and compare different versions, allowing champions to estimate differences between narrow vs wide rollout, build vs buy, or in-house vs outsourced



Integrated workflow allowing for drafting, review, validation, and budget approval

DIGITAL TRANSFORMATION MANAGEMENT

Solution Datasheet

A Project & Portfolio Management (PPM) solution powered by the Anaplan platform that empowers enterprise organizations to:

- Create business cases for initiatives
- Slice-and-dice portfolios & measure ROI
- Monitor project financials & risks
- Manage projects from inception to completion

CONSTELLATION | Anaplan

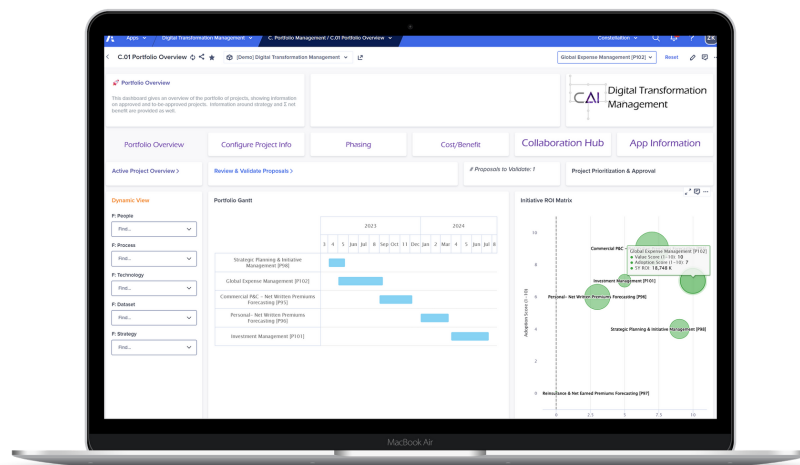
Data-Driven Portfolio Decisionmaking

As a leader, your success is as much dependent on your ability to run your segment of the business as it is to improve your segment of the business. Improving your line of business will primarily involve overseeing the execution of initiatives aligned to overall organizational strategy.

Your charge is to make key decisions on which projects to green-light, which projects require your assistance, which projects to stop, and which projects to reallocate your team's time and talents.

This is far easier said than done. It requires deep line-of-sight into the facts of how each of the projects in your charge are going.

Constellation's DTM solution provides an integrated one-stop-shop solution that supports the Project & Portfolio Management (PPM) lifecycle from ideation through to completion. If you have to make tough decisions, better to make them on a bedrock of sound data.



Solution Features



Powerful data visualizations to support decision-making around which projects to fund, to reinforce, to stop, and to intervene



Integrated project management KPIs allow for real-time reporting on status, financials, and risks for each project



Automated, self-service reporting



Dynamic View enables you to slice and dice your portfolio to show only those that are related to selected People, Process, Technology, Dataset, or Strategy

DIGITAL TRANSFORMATION MANAGEMENT

Solution Datasheet

A Project & Portfolio Management (PPM) solution powered by the Anaplan platform that empowers enterprise organizations to:

- Create business cases for initiatives
- Slice-and-dice portfolios & measure ROI
- Monitor project financials & risks
- Manage projects from inception to completion

CONSTELLATION | Anaplan

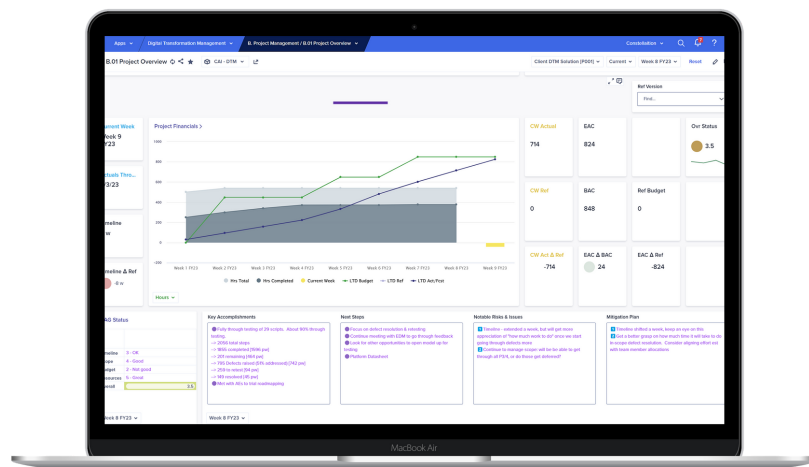
Agile Enterprise Project Management for Grown-Ups

As much as we lionize the idea of entrepreneurs coming up with billion-dollar ideas in a garage with little more than boxes of ramen, a few paperclips, and a computer, we know that to be fundamentally untenable in an enterprise setting. Nevertheless, modern enterprises have taken key learnings from the successes of start-ups in the digital age - that of iterative development, customer-focused design, and working solutions - and are applying them in an enterprise context.

The old adage goes: "If you want to go fast, go alone. If you want to go far, go together." Applied to digital transformation, this can be taken to suggest that:

..you can use simple tools to solve small problems, but big problems require platforms that can handle the complexities that come from millions of customers, thousands of stakeholders, and dozens of departments.

The heart of Constellation's DTM solution is a robust, integrated, enterprise-grade Project Management suite of tools to help manage the most challenging of project deployments.



Solution Features

Everything you would expect from an Enterprise PPM: role-based permissions, project plans, project financials, source system integration, project-level time tracking, user story collection, kanban boards, RAID logs, solution testing support, and deployment

Key PPM Differentiators:

- (1) Manage thousands of projects across tens of thousands of employees
- (2) Integrated cross-referencing to help with traceability and auditability
- (3) Dynamic View to allow stakeholders to focus only on what's relevant to them

About Constellation LLC

Constellation is a management & technology consulting firm that partners with clients to achieve values-aware digital transformation.

We believe the most successful organizations are those who embed their core values into the way they operate their business, leveraging the best of available technology and data to achieve their mission. We work with leading, proven, cloud-first SaaS platforms to help our clients solve their most challenging problems. We leverage tried-and-true project methodologies to maximize project success and user adoption. We bring our experience, opinions, and recommendations to our clients to help them navigate the challenges of digital transformation.